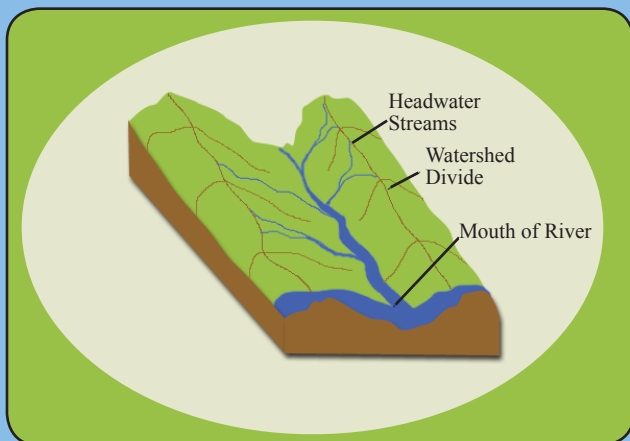


WHAT'S A WATERSHED?

A watershed is the land area that drains into a stream, river, or lake. The watershed is defined by the highest points of land around the water body. No matter where you live, you live in a watershed!



CAN I DO RESTORATION?

Streams that are showing signs of extreme erosion (as pictured) or that have been straightened make good restoration candidates.

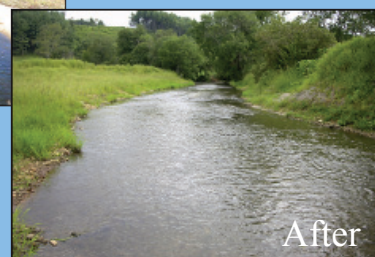


Streams in areas that have been logged, straightened and/or drained make good candidates for restoration. Without streamside vegetation, water quality and habitat is degraded and there is little filtering of pollution (nutrients and sediment) before they reach the stream.



Wetlands that have been drained for farming, forestry and development also make good restoration projects. Reforestation of floodplains, filling ditches, and removing fill on your property can help to store water during flood events, improve habitat for wildlife, and help keep water clean.

HOW WILL IT LOOK?



HOW AM I HELPING?

Clean Water

Streams, wetlands, and streamside vegetation (riparian buffers) offer invaluable services to people and to the environment, such as providing water for drinking and for outdoor activities such as swimming and fishing.



Wetlands help reduce flooding and filter harmful toxins like oils and pesticides that can make our drinking water unsafe. Riparian buffers protect water quality by filtering pollutants, help lessen flooding, and make good habitat for wildlife.

Family Activities



By working together to preserve and restore these natural systems, we help ensure that we will have enough clean water for our kids and the generations to follow them, and safe places to play, fish, and swim with our families.

WHAT IS STREAM AND WETLAND RESTORATION?

Restoration is the process by which a damaged stream or wetland can be restored to look and act like a natural stream or wetland. These restored streams and wetlands help ensure that we have clean water for us and our families. We all share this common resource, and it is up to us to make sure we keep our waters clean and safe for ourselves and the generations to come. We can all help by planting trees and restoring our local streams and wetlands.





Wildlife and Beauty

By preserving and restoring streams, wetlands, and buffers, we are providing a safe haven for thousands of wildlife species that rely on these systems. We are also helping to enhance the natural beauty of the landscape around us that we so often enjoy when walking, biking and boating.



By getting involved, you can be sure that you are helping to keep water clean, providing a beautiful and safe environment for outdoor activities, and preserving the natural landscape for generations to come.

HOW TO GET INVOLVED

Landowner Options

Various programs exist for landowners who are interested in doing restoration on their property. Restoration activities may include stream restoration, wetland restoration, and/or buffer planting or preservation. Programs such as the NC Ecosystem Enhancement Program are voluntary and will help guide the whole project.

Landowner Benefits

Restoration programs such as NC Ecosystem Enhancement Program will pay for and oversee the restoration of streams or wetlands. A voluntary agreement is made between the restoration program and the landowner regarding the part of the property where restoration will take place. The agreement often takes the form of a conservation easement, which protects the restored stream or wetland but allows landowners to maintain ownership of the property. Landowners may receive compensation or tax benefits for donating or selling a conservation easement.

Contact Information

If you are interested in learning more about the restoration programs available to you, please contact Heather Saunders at (919) 558.9319 or hsaunders@tjcog.org or contact Michele Drostin at (919) 715-6817 or michele.drostin@ncmail.net. Visit <http://www.nceep.net> for more information on landowner options and follow the links called "Doing Business with the NCEEP" or "Information for Landowners".



KEEPING OUR WATERS CLEAN

A Guide to Stream and Wetland Restoration



The Upper Neuse River Basin Association and the North Carolina Ecosystem Enhancement Program are leading an effort to restore and protect streams and wetlands in your watershed. And we need your help to make a difference!

**Upper Neuse River Basin Association
PO Box 12276, RTP, NC 27709
(919) 558-9319**

&

**NC Ecosystem Enhancement Program
1652 Mail Service Center, Raleigh, NC
27699
(919) 715-0476**